



QUICK START GUIDE

ActaStim-S Spine Fusion Stimulator

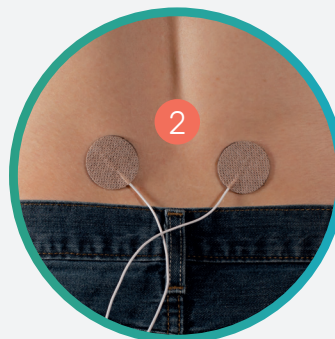


Assembly & Application

- A** Select appropriate Generator Cable length [long **1a** or short **1b**]. Connect Electrodes **2** to cable pins.



- B** Electrodes **2** will be placed on the lower back on either side of the site of spine fusion surgery area. Clean and dry the skin before attaching the electrodes.



- C** Connect Generator Cable **1a** or **1b** to Generator **3** .



- D** Insert Battery **4** into Generator **3** . This turns on device including display/audio/vibrate. Check back page for indicators.



- E** Generator **3** can be clipped on belt, carried in a pocket or bag, or placed on furniture.



Important Safety Information



Do not use Generator in the shower. (Disconnect Electrodes from Generator Cable)



Do not immerse in water

See patient manual for additional safety information.


Charger Operation

Connect Charging Cable **5** to Power Supply Block **6**.

Connect Charging Cable **5** to Battery Charger **7** or Battery Charger Dock **8**.

 **Battery Charging** (Orange Icon)

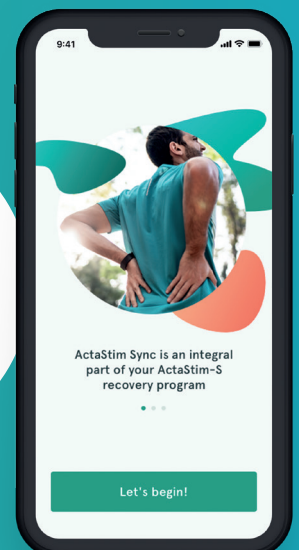
 **Battery Charged** (Green Icon)

 **Night Mode**
(Dimmer Switch)



Get started with ActaStim Sync

- Scan QR code or search “**ActaStim Sync**” in the AppStore or Google Play
- Download ActaStim Sync app
- Open app and follow the prompts



Indicators & Troubleshooting

Indicator	Description	Action
	Button to Mute Audio/Vibrate and Turn Off Display	Press once, twice or three times to turn off audio and vibrate, or to toggle display on/off.
	Green Battery = Charged Green Check = Treating	No action required.
	Orange Electrodes = Connection Issue <i>Battery may be green, orange or flashing</i>	<ol style="list-style-type: none"> 1. Check connections A and B 2. Check that electrodes C are in contact with the skin 3. Check manual
	Orange Battery = Need to make sure that Spare Battery is charging as current battery is low Green Check = Treating	Check that Spare Battery is charging or start charging Spare Battery.
	Orange Flashing Battery = Need to change Battery <i>No Green Check = Not Treating</i>	Remove battery from Generator and replace with charged Battery from Charger.
	Orange Triangle = Product Fault <i>Battery may be green, orange or flashing</i> <i>No Green Check = Not Treating</i>	Call Customer Support 1-800-901-5667
	Orange Flashing Battery, Triangle and Electrodes = End of Product Life	270 days of treatment complete. Device will no longer provide treatment. Contact Physician.